

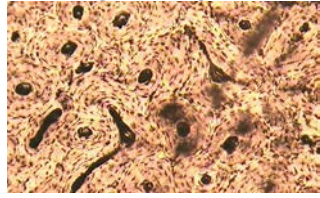
Weekly Discovery

We SHARE to inspire and ignite ideas!

13 March 2017 – 17 March 2017

BUILDING MATERIALS

Bone-inspired steel could make our buildings stronger



Discover a type of steel that is inspired by the [structure of bone](#). It has low density, a lattice-like structure, high mechanical strength and can even heal its own cracks. Read more about the bone-inspired steel at [Science](#).

Source: [The Verge](#) (9 March 2017)

COMPANIES

100 best companies to work for



A notable yearly feature listing of the 100 best companies to work for. Findings also revealed that companies that score highly on trust and are demographically diverse performed better than their peers in terms of revenue growth.

Source: [Fortune](#) (2017)

FACE RECOGNITION

Paying with Your Face



Face++ is a company that uses deep learning software for facial recognition that is currently being used for mobile payment and access to buildings. It may change a number of things, from policing to the way people interact every day with banks, stores and transportation services.

Source: [MIT Technology Review](#) (2017)

GLOBAL ECONOMY

Global Economic Risks and Opportunities in 2017 and Beyond



2016 saw a global economic downturn under the risks brought by Brexit and presidency of Trump. It is forecasted that this year the economic growth will be restored with a few opportunities but still remain at a low point.

Source: [Euromonitor International](#) (13 March 2017)

HEALTH IT FINDING

Report: Health IT Venture Capital Funding Increases to \$5.1 Billion in 2016

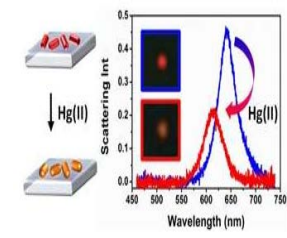


Read about [healthcare funding](#) and find out what the most funded areas in 2016 were. Healthcare practice-focused companies raised \$1.6 billion in 185 deals, 32 percent of the total funding. This exceeds the \$1.5 billion raised in 171 deals in 2015.

Source: [Healthcare Informatics](#) (6 March 2017)

NANORODS

Gold nanorods could be used to develop smaller portable mercury sensors



This technology alleviates the need for expensive equipment to be used for mercury detection. Nanorods made of gold have are inexpensive, high sensitivity and are portable. Read more at [Science and Technology of Advanced Materials](#).

Source: [Phys.org](#) (8 March 2017)

PRODUCT DESIGN

The WOObI play air pollution mask meets kids at eye-level with a playful approach

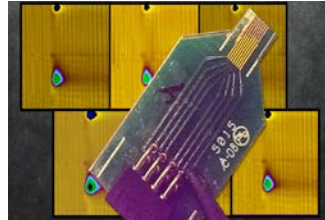


The 'WOObI play' mask is a high-efficient educational mask designed for kids featuring a playful and customizable appearance.

Source: [Designboom](#) (13 March 2017)

SENSORS

New Sensor Allows Researchers to Track Dopamine in the Brain



This new sensor's electrodes are only 10 microns in diameter and can determine the presence of dopamine at millisecond timescales. This technology is particularly useful in detecting brain disorders, particularly Parkinson's disease, that comes about due to dysregulation of dopamine. Read more at [Lab On a Chip](#).

Source: [SciTechDaily](#) (3 March 2017)

SMART MATERIALS

Would you wear fish slime?



Soft but strong, expandable and dissolvable in water, hagfish slime has been used to produce thinner, protective and renewable fabrics. Learn more at [IFL Science](#).

Source: [ShareAmerica](#) (9 March 2017)

SMART NATION

Smart cities: Digital world unlocks door to the future



A few cities have embarked on transforming themselves into smart cities, such as Hangzhou, Barcelona and Singapore. The Smart Nation initiative in Singapore integrates e-government services, data analytics, 3D mapping of the island, and more.

Source: [South China Morning Post](#) (13 March 2017)

SUPPLY CHAINS

Global Supply Chains Are About to Get Better, Thanks to Blockchain



Leveraging on blockchain technology, companies such as Walmart, BHP Billiton are tracking their products more effectively along with automation benefits. Additionally, it also keeps the workers in the community in check as it allows the monitoring of activity of each other's credentialed staff.

Source: [Harvard Business Review](#) (13 March 2017)

3D PRINTING

NASA astronauts may soon be able to 3D-print pizzas in space



Introducing Chef 3D by BeeHex, a robot that can rapidly 3D print 12-inch pizzas in space. It can design gluten-free and custom-shaped pizzas. BeeHex have also projected that 3D printed food can be ordered through an app according to the customers specifications.

Source: [ZD Net](#) (9 March 2017)

To view past Weekly Alerts [CLICK HERE](#)
For more articles or in-depth research, contact us at library@sutd.edu.sg!
An SUTD Library Service©2016